



GPAI



OECD.AI
Policy Observatory

Equipping policymakers for trustworthy AI

A comprehensive resource for AI policymaking

OECD.AI is a platform that brings together resources from GPAI, the OECD, their partners and stakeholders to shape policies for trustworthy AI. With the integrated partnership between the Global Partnership on AI (GPAI) and the OECD, OECD.AI features the work produced by GPAI, benefiting from the guidance of a diverse community of experts from over 44 countries.



LIVE DATA ON IMPORTANT AI TOPICS

Our live data helps policymakers to develop, implement, and refine AI policies. It offers a wide range of AI-related data visualisations for comparative analysis, monitoring, and best practice development.

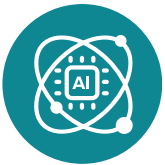
Visit: oecd.ai/data



AI INCIDENTS MONITOR (AIM)

A rich resource for AI incidents and hazards as they appear in the global press, providing insights into risks and aiding in establishing a collective understanding of common AI harms and trustworthy AI.

Visit: oecd.ai/incidents



GENERATIVE AI (GENAI) RESOURCES

This portal covers generative AI's benefits, risks, and evolving aspects, offering tools and resources for comprehensive understanding from a policy perspective.

Visit: oecd.ai/GenAI



CATALOGUE OF TOOLS & METRICS FOR TRUSTWORTHY AI

This centralised resource offers diverse tools, mechanisms and practices to help all actors to ensure AI's trustworthiness.

Visit: oecd.ai/en/catalogue/overview



DATA AND RESOURCES ON AI COMPUTE & CLIMATE

This work addresses the intersection of AI computing capacities and their environmental impacts, especially regarding supercomputing technologies.

Visit: oecd.ai/site/compute-climate



@oecd-ai
on LinkedIn

Contact us:
ai@oecd.org

The AI Wonk Blog:
[OECD.AI/WONK](https://oecd.ai/WONK)



Why OECD.AI works

Artificial intelligence is a global, cross-sector technology that presents opportunities and risks, prompting countries and stakeholders to come together on governance initiatives with broad engagement.

GPAI countries have formed an integrated partnership to advance human-centric, safe, and trustworthy AI, embodied in the OECD Recommendation on AI and AI Principles.

WE CONNECT POLICY SILOS

GPAI provides expertise and guidance upstream of the policy development cycle – often in common frameworks and principles. Initiatives bring together different policy communities to tackle multidisciplinary topics, such as AI and corporate governance or AI and energy systems.

WE BRING STAKEHOLDERS TOGETHER

GPAI works with a multi-stakeholder group of over 400 AI experts worldwide that informs policy responses on emerging topics, from AI risk assessments to tools for implementing trustworthy AI and measuring national AI compute capacities.

A GLOBAL HUB FOR AI POLICY

Tools, data and knowledge on OECD.AI are freely accessible to all actors and stakeholder groups in developed and developing countries alike.

Stay connected



LINKEDIN: JOIN 40K+ AI POLICY ENTHUSIASTS
[@oecd-ai](https://www.linkedin.com/company/oecd-ai)



NEWSLETTER:
[THE LATEST IN AI POLICY](#)



BLOG: INSIGHTS ON AI POLICY
oecd.ai/wonk